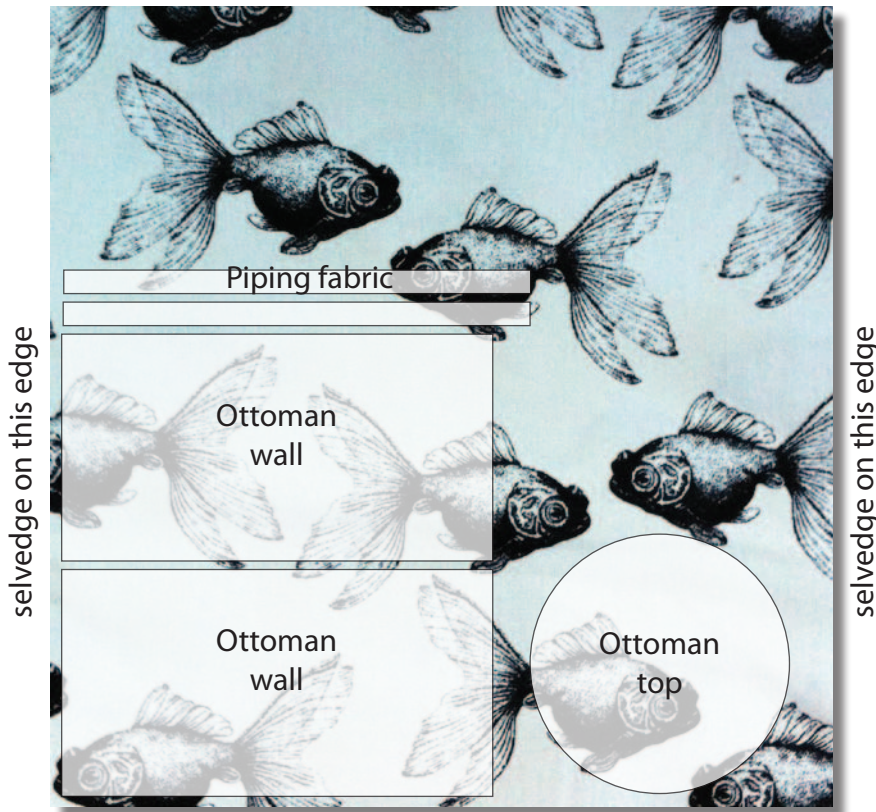


Ottoman Workshop Fabric Requirements

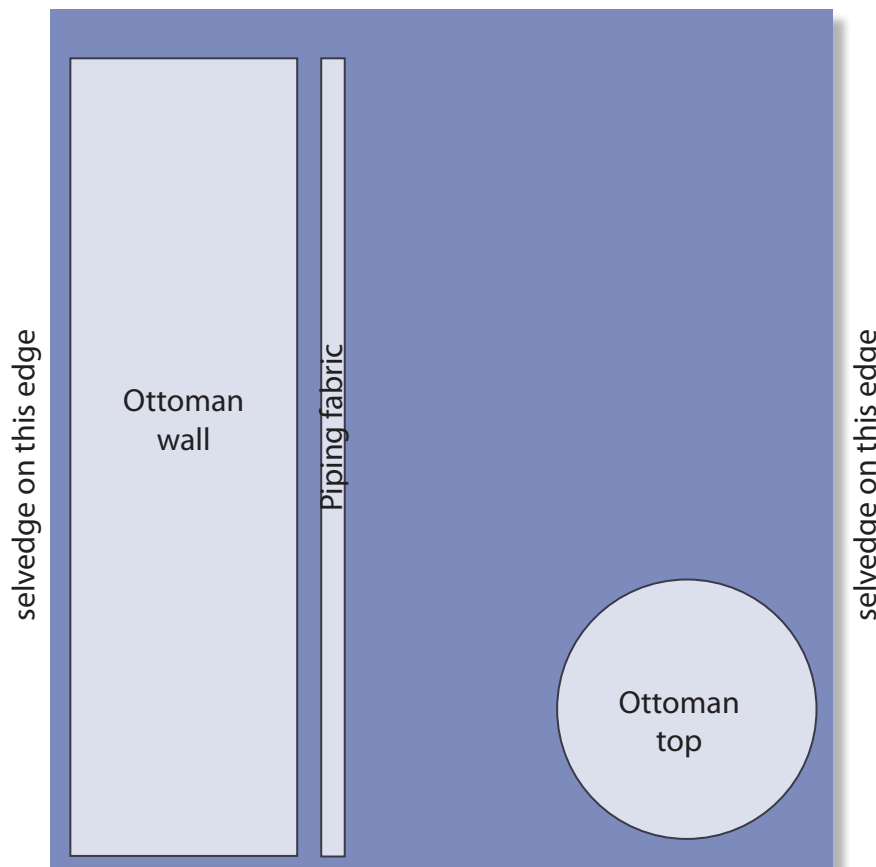
OSCAR



If your selected fabric has a very obvious directional pattern (such as the one shown in the example at left) that runs horizontally from selvedge to selvedge, you will need to cut your ottoman fabric across the width of the fabric in two pieces which will be stitched together. This is because the majority of fabrics are not wide enough to cut the ottoman wall in one piece.

FABRIC REQUIRED: If your fabric has a large repeating pattern, purchase 1.5m. If it is smaller repeating pattern, purchase 1.3m.

If you want the top cut from a different fabric, purchase .6m of that fabric.



If your selected fabric has a design that has no obviously horizontal or vertical pattern from selvedge to selvedge, you can cut your ottoman fabric down the length of the fabric.

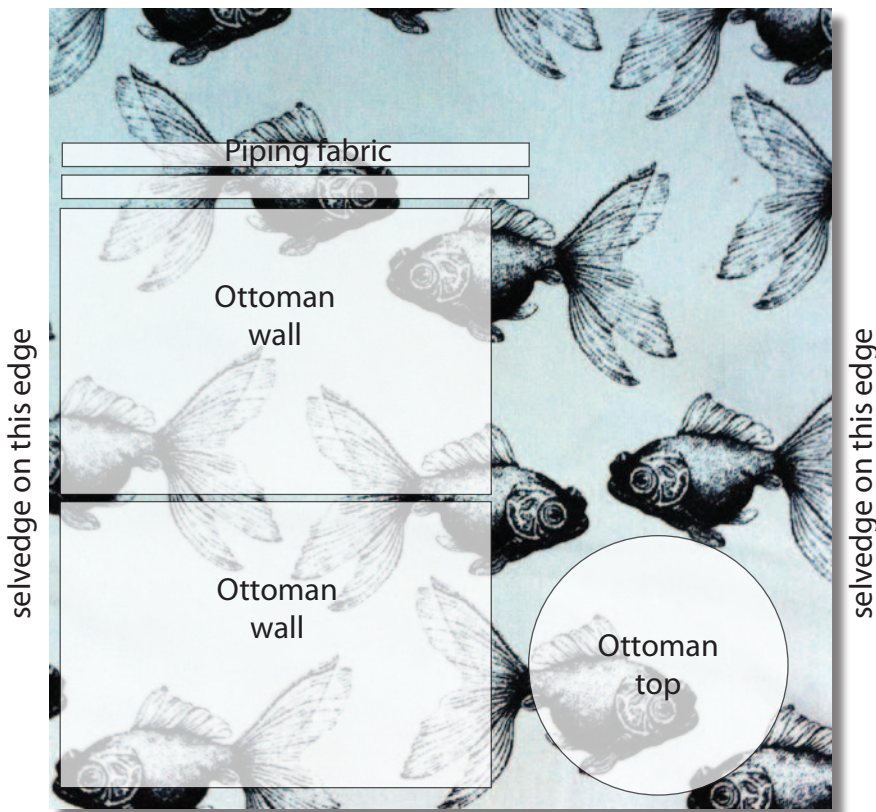
FABRIC REQUIRED: Purchase 1.6m.

If you want the top cut from a different fabric, purchase .6m of that fabric.

Not to scale

Ottoman Workshop Fabric Requirements

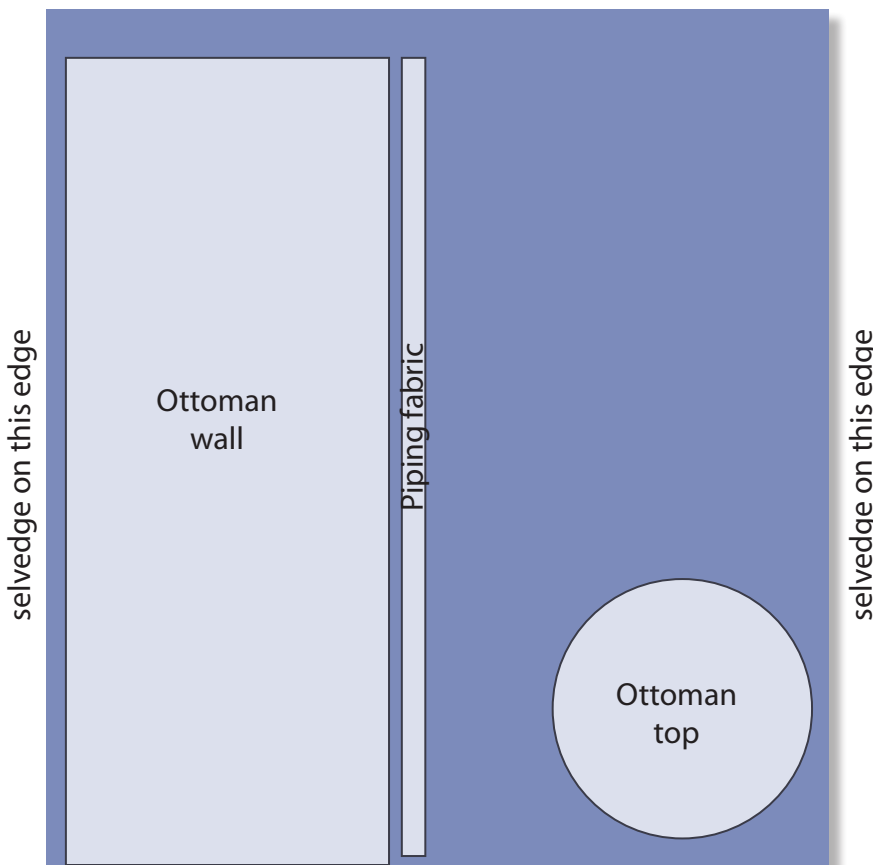
HUGO



If your selected fabric has a very obvious directional pattern (such as the one shown in the example at left) that runs horizontally from selvedge to selvedge, you will need to cut your ottoman fabric across the width of the fabric in two pieces which will be stitched together. This is because the majority of fabrics are not wide enough to cut the ottoman wall in one piece.

FABRIC REQUIRED: If your fabric has a large repeating pattern, purchase 1.6m. If it is smaller repeating pattern, purchase 1.3m.

If you want the top cut from a different fabric, purchase .6m of that fabric.



If your selected fabric has a design that has no obviously horizontal or vertical pattern from selvedge to selvedge, you can cut your ottoman fabric down the length of the fabric.

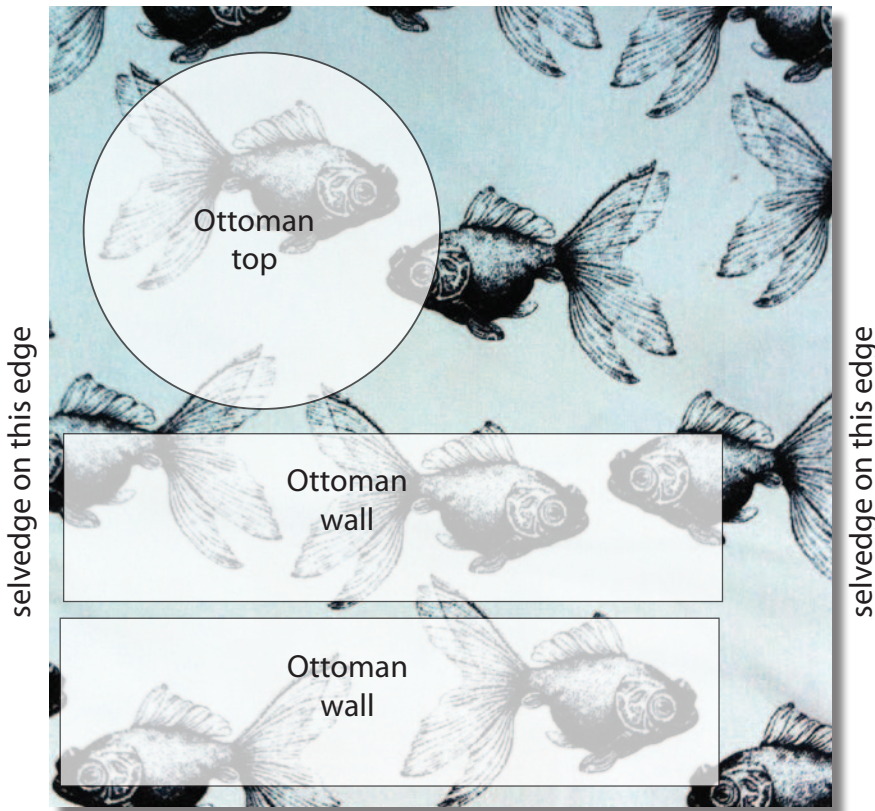
FABRIC REQUIRED: Purchase 1.6m.

If you want the top cut from a different fabric, purchase .6m of that fabric.

Not to scale

Ottoman Workshop Fabric Requirements

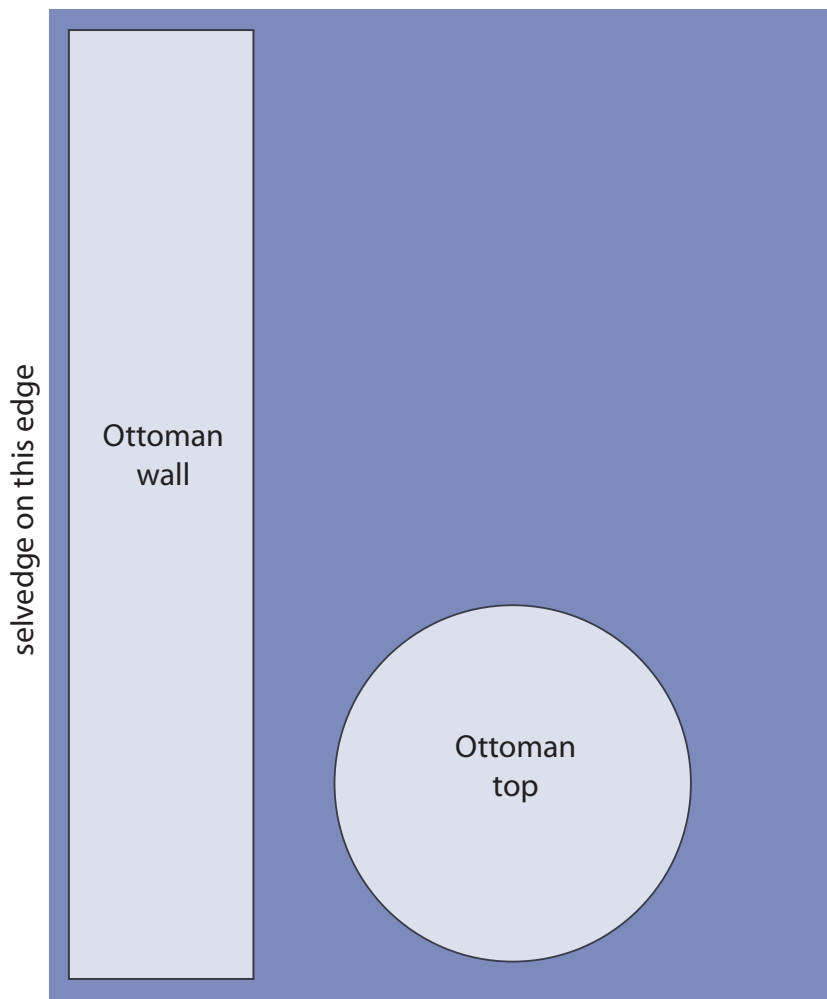
SLIM JIM



If your selected fabric has a very obvious directional pattern (such as the one shown in the example at left) that runs horizontally from selvedge to selvedge, you will need to cut your ottoman fabric across the width of the fabric in two pieces which will be stitched together. This is because the majority of fabrics are not wide enough to cut the ottoman wall in one piece.

FABRIC REQUIRED: If your fabric has a large repeating pattern, purchase 1.6m. If it is smaller repeating pattern, purchase 1.3m.

If you want the top cut from a different fabric, purchase .7m of that fabric.



If your selected fabric has a design that has no obviously horizontal or vertical pattern from selvedge to selvedge, you can cut your ottoman fabric down the length of the fabric.

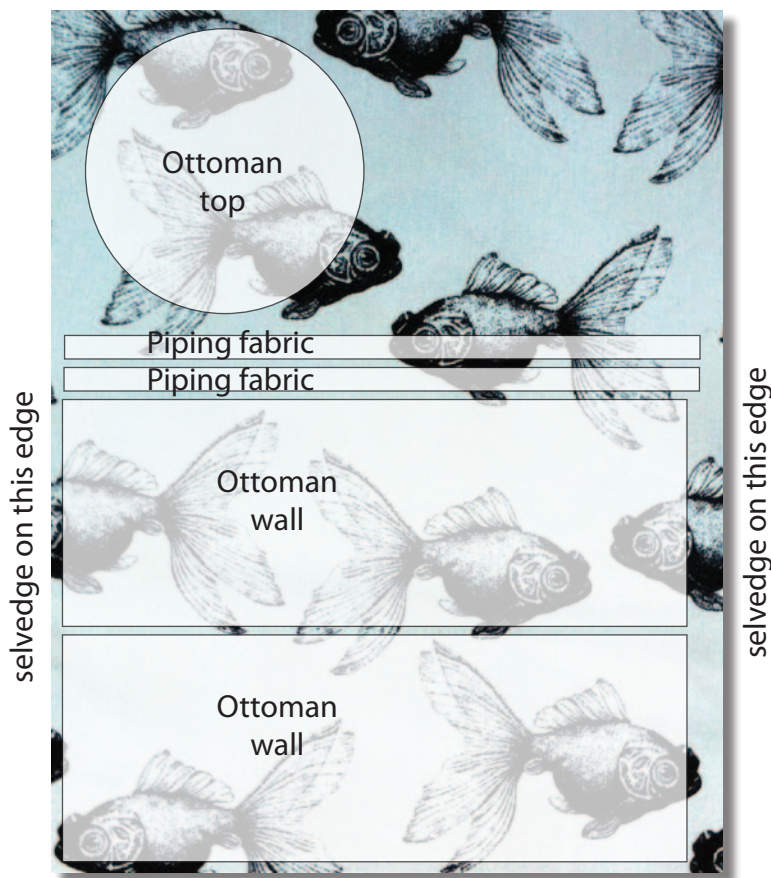
FABRIC REQUIRED: Purchase 2.0m.

If you want the top cut from a different fabric, purchase .7m of that fabric.

Not to scale

Ottoman Workshop Fabric Requirements

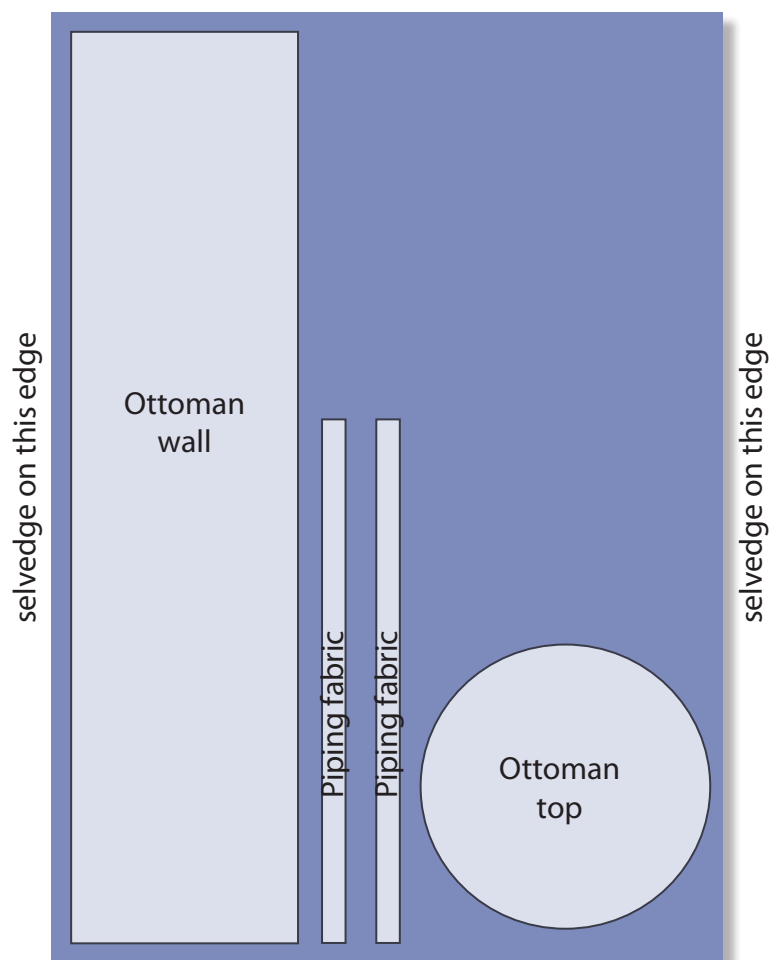
ROLLO



If your selected fabric has a very obvious directional pattern (such as the one shown in the example at left) that runs horizontally from selvedge to selvedge, you will need to cut your ottoman fabric across the width of the fabric in two pieces which will be stitched together. This is because the fabric will not be wide enough to cut the ottoman wall in one piece.

FABRIC REQUIRED: If your fabric has a large repeating pattern, purchase 2.4m. If it is smaller repeating pattern or has no repeat that matters, purchase 2.1m.

If you want the top cut from a different fabric, purchase 1.0m of that fabric and reduce the quantities above by 1.0m.



If your selected fabric has a design that has no obviously horizontal or vertical pattern from selvedge to selvedge, you can cut your ottoman fabric down the length of the fabric as shown at left or across the fabric in two pieces as shown above.

FABRIC REQUIRED: If cutting down the length of the fabric, purchase 2.6m.

If you want the top cut from a different fabric, purchase 1.0m of that fabric.

Not to scale